



i-DEALSEED

**2024/25**  
**CATALOGUE**



Quality • Reliability • Performance



The iDEALSEED range covers most growers' needs and choices. However, Sometimes there is a REQUIREMENT FOR SPECIALIST MIXTURES.

Remember, we are only too happy to oblige. If your mixture needs are not detailed within our catalogue or maybe other species for inclusion are specified then just ask us to competitively produce your special mixture and competitive costings for you.

For further advice on all our mixtures including appropriate seed rates for geographical environments, please ask, either call or Email.

**DIRECT DIAL:** 07920 546426

**EMAIL:** [billy@idealseed.co.uk](mailto:billy@idealseed.co.uk)

[www.idealseed.co.uk](http://www.idealseed.co.uk)

Utilising our extensive portfolio, we can competitively supply comparable mixtures to any competitors mixture on the market today.

(For new customers just call (OR) email for a price on a comparable mixture)

# Table of Contents

Agricultural Leys	5 - 13
Organic Range	14 - 19
Equine & Paddock	20 - 21
Lawns & Landscaping	22 - 25
Sports & Recreation	26 - 28
CSS & SFI Schemes	29 - 37
Wildflowers	38 - 43
Catch Crops	44 - 46
Cover Crops	47 - 48
Game Cover	49 - 51
Pricelists	52 - 59

## Delivery Information:

WE PROVIDE:

**FREE** Packaging & labelling

**FREE** Blending/mixing

**FREE** Delivery (mainland UK only)

**FREE** Consultancy/advice

**FREE** No obligation quotations

Orders weighing 100kg + qualify for 2-3 Working Day Palletised Delivery. Orders under 100kg will be sent on the Small 2-3 Working Day Delivery service as standard and will be delivered in unwrapped packs.

## Why Buy Wholesale Grass Seed from Us?

We have become a trusted source not only online, but offline as well, the **highest quality**, of grass & wildflower seed to the UK market. Every bag of seed you purchase from us, is backed by years of research and testing. **That's why our customers keep coming back for more.**

All our seed for sale can be bought in bulk or in smaller bags of a few kilograms. **We WILL NOT BE BEATEN** on **PRICE** for an equivalent mixture on the market. Idealseed supply across Scotland, England, Wales, Northern Ireland.

Come join us today and look around our online store. Our friendly staff are always happy to help and offer professional advice and guidance to farmers, groundsmen, landscape architects, greenkeepers, contractors, and other professionals.

**“WE FOCUS  
ON THE  
FUTURE”**



# Agricultural

## iDEALSEED Ley Range Ultimate Forage Quality

Top quality grass seed mixtures giving  
outstanding field performance

The iDEALSEED range of grass ley mixtures are specifically designed to incorporate some of the best available varietal material, tried and tested across the UK.



## IDS2000 GREENSPEED ECONOMY LANDSCAPE

%	Variety	Species
60	BOKSER	Perennial Ryegrass
30	MAXIMA	Strong Creeping Red Fescue
10	HELLEN/KOGA	Annual Ryegrass
<b>20.00 Kilo Pack</b>		

### RAPID GROWING GRASS SEED

Looking for cheap grass seed? When you need **GREEN** and you need it **FAST**, our Greenspeed Grass Seed mixture is second to none. This terrific value for money grass seed mixture germinates and grows rapidly within 10 days, giving green cover in record time. Perfect for when you need quick establishment and for budget lawn and landscape projects.

### BENEFITS

- Versatile mixture suited to all soil conditions
- Superb RAPID establishment “within 7-10 days”
- Hardwearing and long lasting, child friendly mixture
- Ideal for Hardwearing Lawns, Landscaping, Parkland and building surrounds
- Creates a strong, durable lawn, very competitive against weeds
- Fescue’s provide excellent soil binding and close knitted bottom growth
- Economical solution for large landscape projects
- Sowing rate: **35 – 50 grams/m<sup>2</sup>**
- 20 kg covers 600m<sup>2</sup> average
- Pack size: 20 kg

- ✓ Hardwearing Lawn
- ✓ Council Lawns & Greens
- ✓ Parks & open spaces
- ✓ Golf Driving Ranges
- ✓ Caravan Parks
- ✓ Embankments
- ✓ Landfill Sites
- ✓ Temporary Green Cover Sites
- ✓ Farm Building Surrounds/Gatepost

%	Variety	Species
50	HELLEN	Annual Ryegrass
25	TEANNA	Italian Ryegrass, Tetraploid
25	SHAKIRA	Italian Ryegrass, Diploid
<b>15.00 Kilo Pack</b>		

### BENEFITS

- Prevention of winter soil erosion into water courses
- Locates nutrients in the soil after previous crop soaking up N, decreasing winter leaching
- Organic matter to the soil improving its quality, structure, and nutrient holding
- I-DS XL Blending ensures the mixture delivers maximum performance

### DESCRIPTION

The fastest establishing grass available with Yield potential 21t DM/ha. The only choice where extra forage is required immediately.

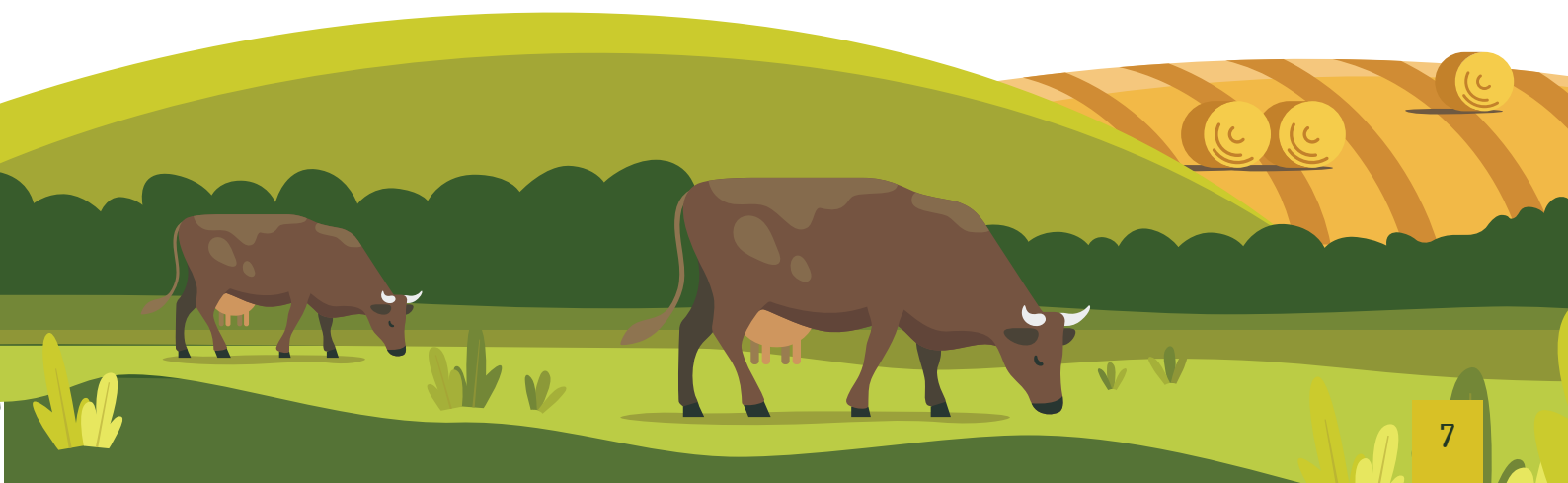
Establishes quickly to provide winter cover even at cool temperatures 5-7°C. Offers production late into autumn, delivering extra grazing opportunities over winter. Exceptionally high yielding & fast growth providing a mature crop in 8-10 weeks.

Sown Spring or Autumn will produce a brilliant first cut + rapid growth thereafter.

DAIRY-SHEEP or BEEF: GRAZING/SILAGE I-DS XL mixture ensures top yield potential for both Autumn and Spring production and exceptional potential for excellent grazing and Autumn silage after Winter Barley.

The very vigorous establishment of our Annual Ryegrass combined with Diploid content for higher dry matter is superior to stubble turnips for lamb finishing, with assured re-growth.

Up to 18 months duration of full production potential and could also be established after a spring cereal harvest. Stitching in I-DS XL @ 10Kg/Acre after 18 months is recommended. Later production = winter grazing option. Thanks to its ability to germinate at lower temperatures than conventional leys meaning it can be sown safely even throughout October.



## MIXTURE: IDEAL SUPERMO

2 – 3 YEARS

%	Variety	Species
60	AUSTON CRUSADER	Hybrid Ryegrass, Tetraploid
20	SHAKIRA	Italian Ryegrass, Diploid
20	TEANNA	Italian Ryegrass, Tetraploid
<b>14.00 Kilo Pack</b>		

### BENEFITS

- Very early Spring and late Autumn seasonal growth
- 20% more forage yield than Perennial Ryegrass
- Best suited to high nitrogen situations
- Superb mid-season production
- Superior quality than 100% IRG blends on the market
- Hybrid combines Perennial Ryegrass type persistence and quality
- Three - Five cuts per season
- Sowing rate: 12-15kg per acre

### DESCRIPTION

Exceptional production for up to two or three years of intensive cutting and aftermath grazing, high yields respond very quickly to required application of fertiliser/slurry. Suitable for both spring and autumn sowing. When to cut: First cut end May, following by spring graze will produce 70+D value silage, followed by cuts at five-week intervals. This ultimate silage mixture which yielding up to 17tDM/ha in its first year under high input management will achieve 3-5 cuts.

## MIXTURE: IDEAL MULTIMO

3 – 4 YEARS

%	Variety	Species
35	AUSTON CRUSADER	Hybrid Ryegrass, Tetraploid
20	BOYNE	Intermediate Perennial Ryegrass, Diploid
30	NOLWEN	Intermediate Perennial Ryegrass, Tetraploid
15	PERUN	Festulolium
<b>14.00 Kilo Pack</b>		

### BENEFITS

- Hybrid combines Italian yield and sugar content with Perennial persistence quality
- Very high 'D' value and palatability
- Hybrid Ryegrass produces 10-15% more yield than Perennial Ryegrass
- Impressive disease resistance
- Exceptional winterhardiness and drought tolerance
- Excellent silage yields combined with good sward density for grazing

### DESCRIPTION

Tetraploid hybrids grow well on their own, although do present a slightly open sward. The Seasonal growth of the sward is vastly improved by growing a combination of hybrid varieties with Diploid Perennial Ryegrass forming a tight sward base particularly in the critical mid-season period.

Up to four cuts per year May, July, August, and October. This is the ultimate medium-term silage mixture, yielding up to 16t DM/ha in its first cut and easily last up to five years. Sowing rate: 12-15kg per acre.



## MIXTURE: IDEAL NITROMO

3 – 4 YEARS

%	Variety	Species
24	AUSTON CRUSADER	Hybrid Ryegrass, Tetraploid
18	NOLWEN	Intermediate Perennial Ryegrass, Tetraploid
20	BOYNE	Intermediate Perennial Ryegrass, Diploid
15	PERUN	Festulolium
20	ROSETA	Red Clover
3	DUBLIN	Large White Clover

13.50 Kilo Pack

### BENEFITS

- High protein “SUGAR” sward for ultimate big bale / clamp silage
- Produces 80kg/acre of Nitrogen, thus vastly reducing input costs
- Hybrid Ryegrass provides consistency in the clamp
- Impressive disease resistance
- Outstanding silage quality and rapid re-growth
- Excellent silage yields with aftermath grazing

### DESCRIPTION

There are a growing number of farmers now seeking to reduce the cost of production by using less fertiliser and by reducing the amount of purchased feed. It is predicted that many dairy, beef, sheep farmers will choose to grow high clover leys and adopt a lower cost production system.

High Red clover leys require little or no nitrogen fertiliser and provide an excellent source of protein.

### Why Red clover?

Red clover grown in forage seed mixtures offer a cheap alternative to nitrogen fertiliser and provides a homegrown source of protein. Clover plants are able to extract nitrogen from the air, which itself is three quarters nitrogen, indirectly into the soil via bacteria in nodules on the roots.

## MIXTURE: IDEAL SUPREME LONG-TERM CUT & GRAZE

%	Variety	Species
20	BOYNE	Intermediate Perennial Ryegrass, Diploid
15	NOLWEN	Intermediate Perennial Ryegrass, Tetraploid
30	TODDINGTON	Late Perennial Ryegrass, Diploid
20	BIJOU	Late Perennial Ryegrass, Tetraploid
8	CLIMAX	Intermediate Timothy
3	DUBLIN	Large White Clover
4	LIFLIX	Medium White Clover

14.00 Kilo Pack

### BENEFITS

- Exceptional reliability for consistency in the clamp for many years
- Persistent mixture designed for BIG-BALE silage, early bite and forming a dense sward
- Very quick regrowth and recovery after intense grazing
- Tetraploid for High energy and high sugar content

### DESCRIPTION

Supreme produces an excellent dual-purpose ley which is equally suitable for Sheep, beef, and Dairy, contains highly palatable and persistent DNDF “high fibre” varieties ensuring exceptional quality grazing with over many years. The thick bottomed sward structure is obtained by using predominantly late perennial ryegrasses and high proportion of nutritious white clover. Exceptional winterhardiness.

## MIXTURE: HIGHLANDER

## PERMANENT PASTURE

%	Variety	Species
12	CONARTICA	Meadow Fescue
20	BOYNE	Intermediate Perennial Ryegrass, Diploid
26	TODDINGTON	Late Perennial Ryegrass, Diploid
15	TWYMAX	Late Perennial Ryegrass, Tetraploid
10	MAXIMA	Strong Creeping Red Fescue
8	CLIMAX	Intermediate Timothy
3	EVORA	Smooth Stalked Meadow Grass
6	LIFLIX	Medium White Clover
<b>14.00 Kilo Pack</b>		

### BENEFITS

- Unique formulation of Grazing perennial's and Creeping Red Fescue will provide a tight sward
- Exceptionally winterhardiness and outstanding persistency to hard grazing
- Designed many years ago for high altitudes areas it also performs great on lowland areas

### DESCRIPTION

Permanent pasture mixture providing excellent long-seasonal grass exceptional for long-season grazing and silage if required. Timothy is extremely resistant to cold temperatures and provides good late-season growth. The thick bottomed sward structure is obtained by using late perennial ryegrasses, creeping fescues, and highly nutritious white clover.

## MIXTURE: FOUNDATION LONG-TERM GRAZING/CUT

%	Variety	Species
30	TODDINGTON	Late Perennial Ryegrass, Diploid
30	OAKPARK	Late Perennial Ryegrass, Diploid
10	BIJOU/ TWYMAX	Late Perennial Ryegrass, Tetraploid
15	NASHOTA	Late Perennial Ryegrass, Tetraploid
8	CLIMAX	Intermediate Timothy
4	LIFLIX	Medium White Clover
3	DUBLIN	Large White Clover
<b>14.00 Kilo Pack</b>		

### BENEFITS

- Great early spring and late autumn growth, very consistent in the clamp throughout the growing season
- Excellent palatability and digestibility
- Provides a dense uniformed easily managed sward. 70D over a narrow period it's easy to manage.
- 100% Late heading grasses producing a very dense, hard-wearing sward
- Surplus growth makes exceptional quality silage
- Yield potential 17.7T DM/ha in the first year
- Ultimate mixture for persistency and winterhardiness

### DESCRIPTION

Quality long-term intensive grazing mixture providing superb quality silage in the clamp if required. Late heading Perennial Ryegrasses, Clover and Timothy provide high D-value combined with high levels of sugar, minerals, and protein content. Reducing poaching. Late pasture perennial will also provide extended seasonal growth starting very early in the spring and finish late autumn providing at least 3 weeks more leafy grazing.

# iDEALSEED Hay / Haylage Leys

Both designed specifically for high quality Hay / Haylage production.

## Short Term Hay/Haylage (2-3 Years)

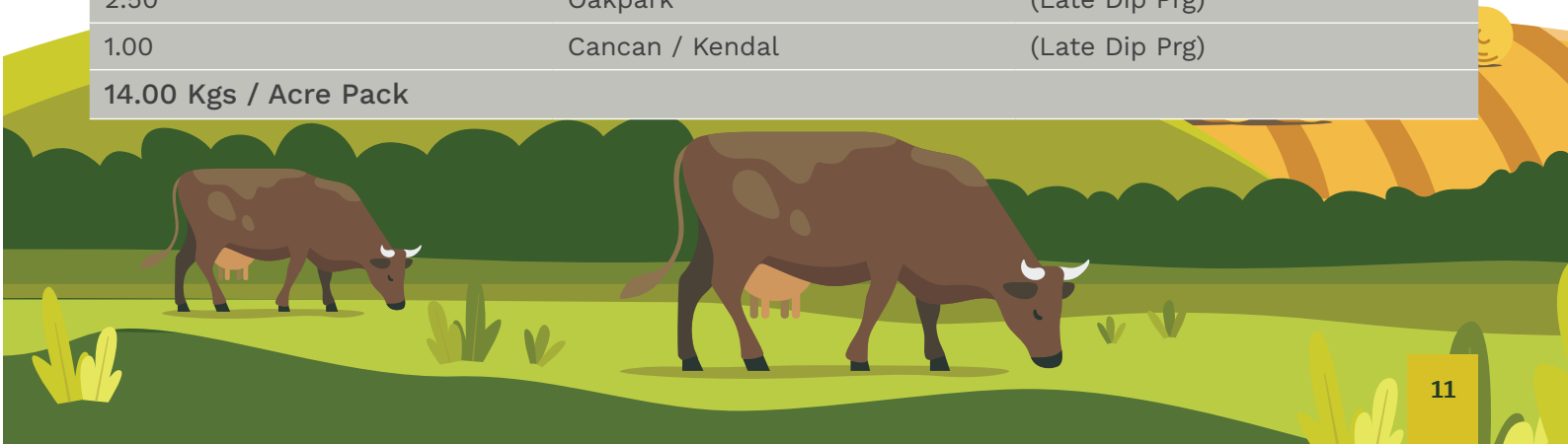
This mix is devised specifically for the production of hay or haylage. Lasting two years, and with good disease resistance.

Weight	Variety	Species
6.00	Shakira	(Dip Ital Rg)
4.00	Star	(Dip Ital Rg)
4.00	Temprano	(Early Dip Prg)
14.00 Kgs / Acre Pack		

## Longer Term Hay/Haylage Leys (4-6 Years)

A longer term option for hay and haylage with longer lasting perennial ryegrass. Diploid varieties have been included for faster drying. Timothy will provide good bulk & high quality yields.

Weight	Variety	Species
1.25	TBA	(Timothy)
1.25	Laura / Senu	(Meadow Fescue)
4.00	Temprano	(Early Dip Prg)
4.00	Nifty / Boyne	(Int Dip Prg)
2.50	Oakpark	(Late Dip Prg)
1.00	Cancan / Kendal	(Late Dip Prg)
14.00 Kgs / Acre Pack		



# Herbal Leys

Our high performance Herbal Leys are made up of grasses, herbs and legumes. Together they deliver soil fertility, structure & boost livestock health.

## iDEALSEED HP Herbal Ley

A superb all-round herbal Ley that exhibits the huge advantages of herbal inclusion whilst providing additional contributions from the other mixture components. Provides an exciting alternative grazing option to just ryegrass and clover mixtures.

Designed for continuous grazing and forage utilisation throughout the growing season. Improves soil structure, adds essential minerals, and enhances both palatability and the general health of grazing livestock. Perfect choice to lower or eliminate N based fertiliser usage.

Weight	Species
2.50	Late Tet Perennial Ryegrass
2.50	Late Dip Perennial Ryegrass
0.75	Festulolium
2.25	Sainfoin
0.75	Timothy
0.75	Meadow Fescue
1.00	Red Clover
0.50	Birdsfoot Trefoil
0.25	Medium Leaved White Clover

Weight	Species
0.25	Small Leaved White Clover
0.50	Ribwort Plantain
0.10	Yarrow / Sweet Fennel
0.50	Persian Clover
0.70	Burnet
0.20	Sheeps Parsley
0.50	Perennial Chicory
Optional without Perennial Chicory, by increasing the alternative herb contents	
14.00 Kgs / Acre Pack	

## iDEALSEED HP Economy Herbal Ley

The 'economy' Herbal ley is a flexible alternative at a lower price for your customers to consider. It's an extremely diverse mixture in species terms. We have found it has performed exceptionally well across a range of soil types and locations in the past 5 years or so.

Weight	Species
3.00	Late Tet Perennial Ryegrass
2.50	Late Dip Perennial Ryegrass
1.00	Festulolium
2.15	Common Sainfoin
1.00	Timothy
0.75	Meadow Fescue
1.00	Rozetta (Red Clover)
0.25	White Clover Blend
0.50	Crimson Clover
0.50	Forage Burnet
0.50	Agric. Per. Chicory
0.40	Ribwort Plantain
0.10	Sheeps Parsley
0.35	Persian Clover
14.00 Kgs / Acre Pack	

# Organic Range

A first-class quality portfolio of classic organic ley mixtures.

Always designed for top field performance at very sensible prices.

## Mixture Specifications

All mixture/variatal ingredients are fully detailed on each and every bag; highlighting the 70% Organic constituents. (We reserve the right to substitute varieties if a variety does become sold out.) Any such alteration will always be specified on all DEFRA seed labels and mixing sheets at time of production.



## Key Criteria and Objectives

- Realistic / economic seed mixture costs.
- Providing a wide range of re-seeding options in terms of ley duration.
- Matching management needs via high quality milk and meat production.
- Proven organic ley mixtures that have performed across a host of UK locations over the last 20 plus years.
- The inclusion of top quality, organically produced seed at a minimum of **70%** by weight in each ley mixture, to comply with existing legislation.
- To fully optimise ley establishment under organic farming conditions by advocating sensible and liberal seed rates for mixtures in all conditions.
- Perennial Chicory, Sheep Parsley, Burnet and Ribwort Plantain available to enhance mineral intake.

## Classic Clover Rich

- A robust 18 to 24 month Red Clover / Italian mixture.
- Can be utilised in both conversion and full organic systems.
- Produces an abundance of protein rich forage.
- Ideal for green manure, organic matter / fertility building

%	Variety	Species
20	Rozeta	Red Clover
5	Diplomat	Red Clover
5	Fabio	Tet Italian RG
35	Teanna	Organic Tet Ital RG
35	Star	Organic Dip Ital RG

Recommended to sow at a minimum 12.00 Kgs per acre

## Classic Organic Shorter Term

- Ideally suited to 2 to 3 years dual-purpose management.
- Produces excellent silage - plus very palatable aftermaths.
- Hybrid ryegrass and inclusion enhances longevity. The clovers boost soluble carbohydrate and forage protein contents.

%	Variety	Species
3	Diplomat	Red Clover
8	Rozeta	Red Clover
40	Aston Crusader	Organic Hybrid RG
14	Nolwen	Tet Prg
30	Teanna	Organic Tet Ital RG
Recommended to sow at a minimum 12.50 Kgs per acre		

## Classic Organic Medium Term

- Produces high quality digestible herbage over at least a 3 to 5 year period.
- Combines genetically very high yielding varieties to ensure optimum performance in the field.
- Optimises both grass quality and quantity, particularly if managed under an alternating cutting and grazing regime.

%	Variety	Species
5	Buddy	White Clover
6	Dublin	Large leafed White Clover
14	Seagoe / Nolwen	Int Tet Prg
20	Toddington	Organic late Dip Prg
25	Nashota	Organic late Tet
25	Nifty	Organic Int Dip
Recommended to sow at a minimum 13.50 Kgs per acre		

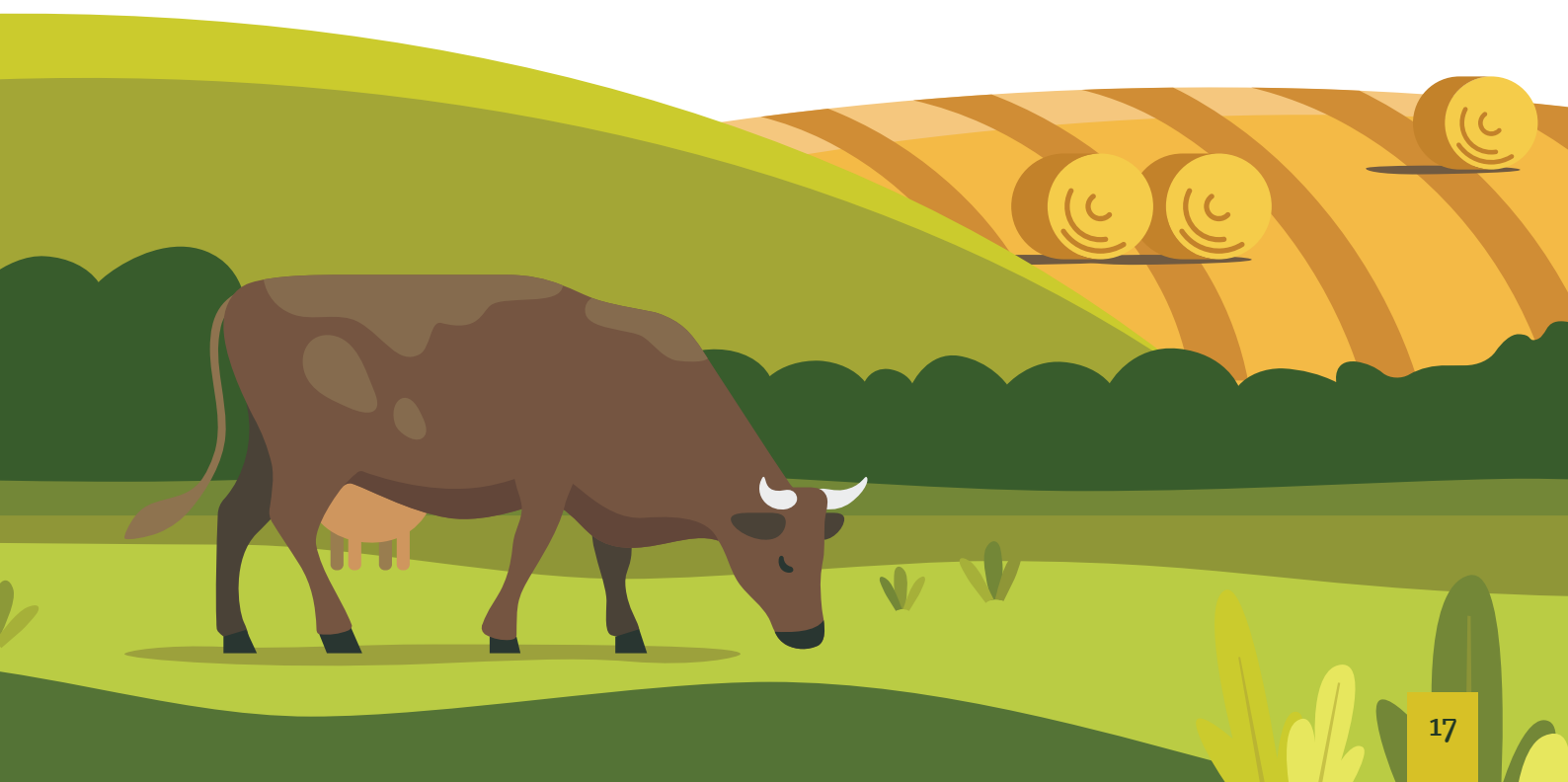


## Classic Organic Perma-Graze

- Produces an extremely dense, clovery sward, exhibiting excellent persistence and winter hardiness.
- Leafy, yet prostrate in growth habit. This ley provides highly digestible grazing value for all livestock types.
- The clovers provide both durability plus propensity to produce liberal amounts of forage proteins and trace elements.
- Contains only late perennial ryegrass. Types best selected to a 'grazing only' regime over the very long term.

%	Variety	Species
5	Rivendel	White Clover
3	Liflex	White Clover
5	Dublin	Large leafed White Clover
35	Toddington	Organic late Dip Prg
35	Nashota	Organic late Tet Prg
5	Oakpark / Cancan	Late Dip Prg
10	Bijou	Late Tet Prg
2	Timothy	

Recommended to sow at a minimum 13.50 Kgs per acre



## Classic Organic Permanent

- First and foremost a permanent (dual purpose) ley. Perfect for very long term use.
- Excellent for early turnout, giving lush palatable growth in spring.
- Designed specifically to meet a range of uses on the livestock holding. Ideal for silage/hay/haylage plus set stocking or paddock grazing regimes.
- An extremely hardy mixture. The best choice for quality forage yield at higher altitudes in marginal farming situations or for those more difficult soil types that pose a real challenge.

%	Variety	Species
4	Liflex	White Clover
4	Dublin	Larger leafed White Clover
14	Nolwen	Int Tet Prg
25	Nifty	Organic Int Dip Prg
20	Toddington	Organic late Dip Prg
3	Timothy	
25	Nashota	Organic Late Tet Prg

Recommended to sow at a minimum 14.00 Kgs per acre

### The Classic Organic Range meets most Organic growers' needs and choices for re-seeding.

Sometimes there is a requirement for specialist mixtures. Remember, we are only too happy to oblige. If the varieties are not detailed here or maybe other grass species and herbs are required then just ask us to competitively produce your special mix requirements for you.

## Classic Organic Supercut (Long Term)

- A highly durable mixture for long term conservation needs.
- First choice for outlying fields, often inaccessible to livestock.
- Gives excellent yields of protein from cut forage.
- Designed to perform under a continuous cutting regime over the long term.
- Includes leading White Clovers that enhance conserved grass quality.

%	Variety	Species
5	Rivendel	White Clover
3	Dublin	Larger leafed White Clover
5	Liflex	White Clover
20	Diwan / Aston Energy	Int Tet Prg
20	Toddington	Organic late Dip Prg
20	Timothy	
17	Nashota	Organic Late Tet Prg
Recommended to sow at a minimum 14.00 Kgs per acre		

### Organic Straights we also provide:

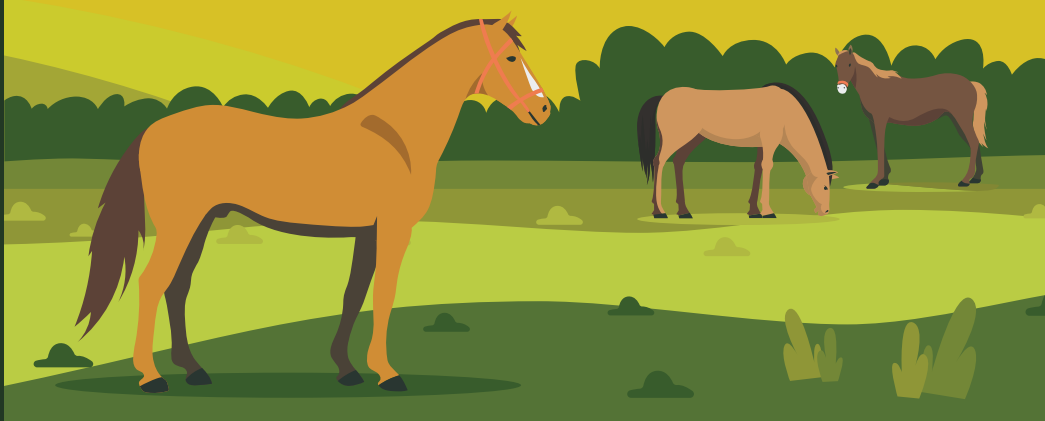
- Westerwolds
- Italian Ryegrass
- Hybrid Ryegrass
- Festololium
- Perennial Ryegrass
- Timothy
- Cocksfoot
- Meadow Fescue
- Red Clover
- White Clover
- Crimson Clover
- Vetch
- Mustard
- Cereals
- Buckwheat

# Equine & Paddock

**Our iDEALSEED range of equine and paddock mixtures produce nutrient-rich grazing for horses and ponies.**

Each mix is fast-growing, quick to establish and creates a hard-wearing grazing pasture. All mixtures are free of clovers and tetraploid grasses that can potentially cause health issues in horses and ponies.

The range includes mixtures without ryegrass and mixtures with beneficial herb species.



## iDEALSEED Horse & Pony Paddock

A specialist and proven equine mixture primarily for grazing and with an option to cut for hay or haylage. Very long term and highly durable. This specific mix does not contain any Clover to avoid potential Laminitis problems in the equine species.

We do not include any Tetraploid Ryegrass varieties in iDEALSEED Horse & Pony because they inhibit the easy cutting of hay / haylage and can be detrimental to equine species digestive systems.

Weight	Variety	Species
1.00	Boyne / Nifty	Int Dip Prg
4.75	Temprano	Early Dip Prg
4.50	Cavendish	Late Dip Prg
2.25	Strong Creeping Red Fescue	
1.00	Timothy	
13.50 Kgs / Acre Pack		

## iDEALSEED Equine Overseeding

Weight	Variety	Species
6.50	Nui	Early Dip Prg
6.50	Esquire	Dwarf Ryegrass
13.50 Kgs / Acre Pack		

## iDEALSEED Equine Herbal

%	Variety
40	Burnet
15	Chicory
25	Ribwort Plantain
15	Sheeps Parsley
5	Yarrow
1.00 Kgs / Pack	

## iDEALSEED Natural Meadow & Laminitics

A specialist high performance equine mixture without any ryegrass content at all. We offer this superb (equine safe) ley mix with the option of suitable herbs being added. Produces natural diverse forage species that are both durable and highly persistent. Adding appropriate herbs to the mixture boosts the availability of vital minerals and vitamins to grazing livestock. Offers flexibility to make high quality hay or haylage.

Weight	Species	Weight	Species
4.50	Timothy	4.00	Strong Creeping Red Fescue
1.50	Meadow Fescue	1.50	Sheeps Fescue
1.50	Smooth Stalked Meadow Grass		

13.00 Kgs / Acre Pack - Option to add 0.50kgs or 1.00kgs Herbal mix when ordering. This contains Perennial Chicory, Burnet, Ribwort Plantain & Sheeps Parsley.

# Lawns & Landscaping

## Top quality seed mixtures for lawns, sport & recreation

The IDEALSEED range of amenity seed mixtures are specifically designed to incorporate some of the best available cultivars, tried and tested in U.K. conditions.



## iDEALSEED Gold Prestige

- Exceptional mix providing the very highest quality sward.
- Hardwearing turf or lawn mixture.
- Only top rated STRI varieties included.

%	Variety	Species
50	Double	Dwarf Ryegrass (STRI listed)
23	Wagner	Chewings Fescue (STRI listed)
20	Maxima	Creeping Red Fescue (STRI listed)
7	Evora	SSMG
Sowing rate: 30-40 grams per m <sup>2</sup> Cutting height: down to 20mm		

## iDEALSEED Fine & Luxurious (no ryegrass)

- A top quality fine mix without ryegrass.
- Ideal for light wear and activity, producing a pristine slow growing lawn surface.
- Produces a beautiful green surface with excellent fine turf characteristics.
- Perfect choice for ornamental lawns and low wear areas.

%	Species
65	Creeping Red Fescue
25	Chewing Fescue
5	Highland (Brown Top Bent)
5	Slender Red Fescue
Sowing rate: 30-50 grams per m <sup>2</sup> Cutting height: down to 10mm	



## iDEALSEED Slow Grow (no ryegrass)

- | A slow growing mixture requiring minimum upkeep.
- | Gives a stunning fresh green colour across the seasons, combined with good wear tolerance.
- | Superb choice for surrounds within urban or rural developments, housing or industrial estates.
- | An economical purchase needing very little maintenance once established.

%	Species
60	Creeping Red Fescue
25	Chewing Fescue
7	Smooth Stalked Meadow Grass
3	Highland (Brown Top Bent)
5	Slender Red Fescue
Sowing rate: 25-45 grams per m <sup>2</sup> Cutting height: down to 10-18mm	

## iDEALSEED Shady Areas

- | This mixture is specifically formulated for damp, difficult or shaded areas.
- | It is luxuriant in its growth and adapts well to low light environments.
- | We do however recommend that customers take great care with the frequency of mowing; grass growing in shady conditions will always be subject to more stress.

%	Species
5	Brown Top Bent
10	Smooth Stalked Meadow Grass
15	Slender Red Fescue
30	Dwarf Ryegrass
40	Creeping Red Fescue
Sowing rate: 35-50 grams per m <sup>2</sup> Cutting height: down to 15mm	



## iDEALSEED Economy Lawn

- | A highly cost effective solution for a range of lawned areas.
- | Contains amenity species specifically bred for the domestic market.
- | Highly durable, persistent and extremely hardwearing.

%	Species
60	Dwarf Amenity Ryegrass
40	Creeping Red Fescue
Sowing rate: 30-40 grams per m <sup>2</sup> Cutting height: down to 20mm	



# Sports & Recreation

**Our Sports & Recreation grass range includes mixes specifically for football, rugby, cricket, golf and bowling greens.**

All mixes are quick to establish, producing excellent colour and a good sward appearance. The grass species in each mix are suitable for close mowing and have a high wear tolerance.



## iDEALSEED Sports Pitch

- | An exceptional and flexible mixture for a range of field sport.
- | Designed for frequent and aggressive use, and exhibiting excellent wear tolerance throughout.
- | Shows outstanding recovery through its re-growth characteristics, retaining its bright green colour.
- | Ideal for football, rugby, hockey, cricket outfield, polo pitches or gallops.

%	Species
35	Dwarf Amenity Ryegrass (STRI listed)
35	Dwarf Amenity Ryegrass (STRI listed)
25	Creeping Red Fescue
5	Smooth Stalked Meadow Grass
Sowing rate: 30-40 grams per m <sup>2</sup> Cutting height: down to 25mm	

## iDEALSEED Sports Renovation

- | Suitable for all recreational pitches.
- | Fast establishment & high shoot density.
- | Tightly knitted turf prevents damage when played on.

%	Species
35	Dwarf Amenity Ryegrass (STRI listed)
35	Dwarf Amenity Ryegrass (STRI listed)
30	Dwarf Amenity Ryegrass (STRI listed)
Sowing rate: 30-40 grams per m <sup>2</sup> Cutting height: down to 20mm	



## iDEALSEED Golf & Bowling Green

- | A classic Chewings Fescue and Bent mix for specific use on green areas (80/20 ratios).
- | Produces a luscious, dense sward exhibiting deep green effect throughout the year.
- | Ideal for those relaxing leisure sports such as Bowls or Golf, (allowing the ball to run smoothly and truly across the surface).

%	Species
80	Chewing Fescue
20	Highland (Brown Top Bent)
Sowing rate: 40-70 grams per m <sup>2</sup>	Cutting height: down to 5mm

## iDEALSEED Cricket Wicket

This mixture offers a combination of two high quality fine-leaved perennial ryegrasses that make it an excellent choice for renovating cricket wickets and other summer sports areas before, during and after the season.

%	Species
50	Dwarf Amenity Ryegrass (STRI listed)
50	Dwarf Amenity Ryegrass (STRI listed)
Sowing rate: 30-40 grams per m <sup>2</sup>	Cutting height: down to 20mm

## iDEALSEED Cricket Outfield

A quick establishing, economical, mixture which will create a compact hard-wearing sward with good appearance. Perfect for summer play and tolerant to close mowing; this mixture offers excellent value for money.

%	Species
45	Dwarf Amenity Perennial Ryegrass (STRI listed)
30	Creeping Red Fescue
20	Chewings Fescue
5	Brown Top Bent
Sowing rate: 30-40 grams per m <sup>2</sup>	Cutting height: down to 20mm



# CSS & SFI

## Specialist Crops to Enhance your Farmland

The Sustainable Farming Incentive (SFI) and Countryside Stewardship Scheme (CSS) continue to become an integral way for farmers and landowners to adopt environmentally friendly practices.

The schemes continue to offer sizeable financial rewards encouraging the promotion of biodiversity, climate change, animal health and general overall improvement of the environment in rural areas.

Below we offer a wide range of mixtures which comply, and in some cases the mixture qualifies for both schemes.

We offer a wide range of cover crop, herbal ley and grassland options.

It is vital to choose the right mixture in order to comply, as there are a range of grasses, herbs and wildflowers to choose from.

The rules are much more vague and simple, offering more choice and freedom for the customer to decide on what to sow. Please don't hesitate to ask for any further advice or bespoke mixing if required.

# AB: Arable Mixes

(pollen and nectar mixes, field margins and bird cover)

## AB<sub>1</sub> Nectar Flower Mix with Vetch & Lucerne

AHL1 NUM2

- Very popular grass-free mixtures designed for the schemes. Highly effective in producing an abundance of flora between early and late summer to encourage insect and small mammal activity.
- Best sown from late March to early April onwards, when soil temps are 9°C or more.
- Regular topping is required in the first year to control weed growth.
- A superb pollen and nectar producing mixture containing lots of diversity.

%	Species	%	Species
8	Alsike Clover	0.5	Wild Carrot
3	Birdsfoot Trefoil	0.5	Black Knapweed
8	Lucerne (pre innoc.)	1	Yarrow
40	Common Vetch	0.75	Oxeye Daisy
18	Red Clover	0.25	Musk Mallow
10	Sweet Yellow Blossom Clover	Seed rate: 5 Kgs / Acre or 12 Kgs / ha 5 Kgs / Acre Pack	
10	Common Sainfoin		

## AB<sub>8</sub> Flower Rich Margins 10% Weight Flowering Species

NUM2  
IPM2

- Flower rich areas give fabulous colour and diversity, thus creating an abundant supply of pollen and nectar rich flowers through the season.
- A superb mix containing many wild flowers as 10% by weight of the mixture.
- Only to be used on arable land, temporary grassland areas or bush orchards.
- Suggest that you cut/top in August/September and again possibly in March/April.

Grasses	
%	Species
3	Crested Dogstail
2	Smooth Stalked Meadow Grass
20	Sheeps Fescue
36	Red Fescue
20	Chewings Fescue
5	Meadow Fescue
4	Timothy

Seed rate: 8 Kgs / Acre or 20 Kgs / ha  
8 Kgs / Acre Pack

Disclaimer: Flowering species are liable to change throughout the season, however there will always be 10 included.

Flowering Species	
%	Species
1.00	Yarrow
0.50	Salad Burnet
1.00	Phacelia
0.25	Oxeye Daisy
0.50	Vipers Buglos
0.50	Corn Cockle
1.00	Wild Carrot
2.50	Vetch
0.50	Meadow Sweet
0.50	Common Mallow
1.00	Sainfoin
0.50	Agrimony
0.25	Red Clover

## AB9 One Year Wild Bird With Sunflowers

AHL2 NUM2

- This mix provides an excellent feed source for birds plus superior cover. It encourages bird and mammal populations, as a result of prolific insect activity.
- Contains a good blend of cereal, sunflowers, brassicae and other species to ensure a quality food source throughout the winter months.
- Best sown from late spring to mid summer in to a clean, weed free seed bed.

%	Variety	%	Variety
15	Sunflower	8	Mustard
60	SP. Triticale	7	Millet
5	Fodder Radish	Seed rate: 20 Kgs / Acre or 50 Kgs / ha 20 Kgs / Acre Pack	
5	Linseed		

## AB9 Two Year Wild Bird Cover

AHL2 NUM2

- This mixture contains a diverse range of species which will produce large amounts of shedded seed.
- It has the potential to provide 2 years of feed and cover for farmland birds such as Grey Partridge and Tree Sparrows.
- An increasingly popular and economical option for those looking to meet the requirements of the AB9 options available.

Two Year Option 'A' (no Sunflower)	
%	Variety
65	SP. Triticale
8	Quinoa
7	Kale/Kale x Rape Hybrid
10	Fodder Radish
10	Millets

Two Year Option 'B' (with Sunflower)	
%	Variety
60	SP. Triticale
15	Sunflower
8	Quinoa
4	Kale/Kale x Rape Hybrid
8	Fodder Radish
5	Millets

Seed rate: 20 Kgs / Acre or 50 Kgs / ha  
20 Kgs / Acre Pack

Please note that these mixtures meet mid-tier requirements. Requirements for a higher tier agreement for this AB9 option may sometimes differ slightly if they are site specific. All mixtures can be tailored to your particular agreement specifications. Please get in touch to discuss.



## AB12 Winter Bird Supplementary Feed

The objective of AB12 is to provide important additional food resources to farmland birds in both late winter and early spring. AB12 is the provision of varying bird feed mixes to supplement existing wild bird feed mixtures on farm holdings. Ideally an AB12 mix should contain at least 30% by weight of at least three of the following: Linseed, Red and White Millet, Sunflower Hearts, Canary Seed, Oil Seed Rape plus the addition of cereal grains (Maize is not allowed).

We offer a range of options that will encourage populations of Tree Sparrow, Grey Partridge, Corn Bunting, Yellow Hammer and Linnet.

NB. The maximum percentage of any of the above five small seed components allowed in an AB12 mix is 50%

### AB15 Two Year Legume Fallow

NUM2  
NUM3

(No grass content)

This mixture reduces flowering blackgrass and provides an abundant supply of pollen and nectar-rich flowers between early and late summer for the duration of the agreement. It also naturally boosts soil fertility and increases nitrogen levels due to the high red clover content.

%	Variety
5	Alsike Clover
2	Yellow Trefoil
50	Common Vetch
10	Lucerne
13	Sweet Yellow Blossom Clover
20	Red Clover
Seed rate: 10 Kgs / Acre or 25 Kgs / ha 20 Kgs / Acre Pack	

### AB15 Economy Two Year Legume Fallow

NUM2  
NUM3

(No grass content)

%	Variety
10	Alex Berseem Clover
20	Contea Crimson Clover
50	Vetch
10	Sainfoin
5	Alsike Clover
5	Sweet Yellow Blossom Clover
Seed rate: 10 Kgs / Acre or 25 Kgs / ha 20 Kgs / Acre Pack	

AB15 option with grasses is available on request.

# GS: Grassland Mixes

## GS<sub>3</sub> Ryegrass Seed Set / Winter Bird Food

NUM2

- A dual purpose high-flying mix, suitable for hay or silage and also providing bird food throughout the winter.
- Very easy to establish and grow and will last for 4 years or possibly longer.
- Higher Tier and ELM.

%	Species
25	Hybrid Perennial Ryegrass
25	Hybrid Ryegrass
25	Intermediate Perennial Ryegrass
25	Late Perennial Ryegrass
Seed rate: 15 Kgs / Acre or 37.5 Kgs / ha 15 Kgs / Acre Pack	

## GS<sub>4</sub> Legume & Herb Rich Sward

SAM3 NUM2

- Superb mix containing 5 Grass, 4 Legumes & 4 Herb species.
- Provides enhanced food supplies and habitats for invertebrates.
- Improves soil structure by improving natural drainage.

5 Grass Species	
Weight	Species
2kg	Int Ryegrass
3kg	Late Ryegrass
0.8kg	Meadow Fescue
1kg	Timothy
0.3kg	Cocksfoot
0.8kg	Tall Fescue

4 Legume Species	
Weight	Species
1.5kg	Red Clover
1.5kg	Sainfoin
0.5kg	Alsike Clover
0.2kg	Sweet Yellow Clover

4 Herbal Species	
Weight	Species
0.5kg	Ribwort Plantain
0.4kg	Sheeps Parsley
0.3kg	Yarrow
1.0kg	Burnet
0.2kg	Chicory

## GS<sub>4</sub> Legume & Herb – No Grasses

SAM3 NUM2

- Provides food and habitats for invertebrates.
- High disease and stress tolerance.
- Legume content maximises nitrogen production.

4 Legume Species	
Weight	Species
1.4kg	Red Clover
1.5kg	Sainfoin
0.5kg	Alsike Clover
0.2kg	Sweet Yellow Clover

4 Herbal Species	
Weight	Species
0.5kg	Ribwort Plantain
0.4kg	Sheeps Parsley
0.3kg	Yarrow
1.0kg	Burnet
0.2kg	Chicory

In 2 acre packs of 12 kilos each

## GS8(i) Species Rich Grassland – Legumes & Wildflowers

NUM2

- Contains UK native wildflower seed & low maintenance grass species common to our natural landscapes.
- This mix will provide a large amount of pollen & nectar rich plants across the year, plus good habitats for insects and farmland birds.
- It will stabilise soils and help reduce surface runoff, thus limiting erosion.

%	Species	%	Species
5	Cocksfoot	1	Black Medick
35	Red Fescue	1	Alsike Clover
8	Smooth Stalked Meadow Grass	2	Yellow Trefoil
15	Chewings Fescue	0.3	Common Sorrel
2	Meadow Foxtail	0.7	Wild Carrot
10	Sheeps Fescue	1	Oxeye Daisy
10	Crested Dogstail	1	Knapweed
8	Timothy	Seed rate: 10 Kgs / Acre or 25 Kgs / ha 10 Kgs / Acre Pack	

## GS8(ii) Species Rich Grassland – Grasses Only

NUM2

- An economical and eco-friendly option without wildflower and legume content.
- Best established from late March to early September.
- Like the GS8 (i) option above, this mixture is for higher tier schemes and ELM.

%	Species	%	Species
3	Bent Grass	2	Meadow Foxtail
45	Red Fescue	5	Small Leaved Timothy
15	Chewings Fescue	10	Sheeps Fescue
10	Crested Dogstail	10	Smooth Stalked Meadow Grass
		Seed rate: 16 Kgs / Acre or 40 Kgs / ha 16 Kgs / Acre Pack	

# SW: Soil & Water

## sw<sub>1</sub> 4/6 Metre Grass & Buffer Strip

AHL4 NUM2

- An exceptional low maintenance field margin mix for CSS & ELM schemes.
- To be sown around the edges of cultivated fields, between the productive part of the field and an existing feature or habitat.
- It will provide protection for existing and creation of new habitats. It will also form habitat networks for small mammals, invertebrates and birds by creating links or corridors between sites.
- If next to a watercourse it will also prevent pollutants such as fertilisers from being transported in surface water runoff.

%	Variety	%	Variety
20	Timothy	10	Smooth Stalked Meadow Grass
20	Meadow Fescue	10	Chewings Fescue
25	Red Fescue	10	Cocksfoot
5	Common Bent	Seed rate: 10 Kgs / Acre or 25 Kgs / ha 10 Kgs / Acre Pack	

## sw<sub>4</sub> Watercourse Buffer Strip / Cultivated Land

AHL4 NUM2

- Creates a varied species cover by nature, including 5 different indigenous grasses.
- Suitable for field margins and corners to protect hedges, ditches and watercourses from nitrate run-offs, erosion and pesticides.

%	Variety
15	Tall Fescue
20	Sheep / Hard Fescue
20	Timothy
10	Smooth Stalked Meadow Grass
35	Creeping Red Fescue
Seed rate: 10 Kgs / Acre or 25 Kgs / ha 10 Kgs / Acre Pack	

## sw<sub>7</sub> Arable Reversion, Grassland Recreation Mix

AHL4 NUM2

- Containing a variety of low maintenance traditional grasses which are easy to establish and maintain on most soil types.
- This mix will require minimum management whilst retaining suitable green cover in keeping with the local landscape and also help to stabilise the soil.
- A wise investment for soil improvement, and erosion control.

%	Variety
20	Meadow Fescue
10	Smooth Stalked Meadow Grass
15	Sheeps Fescue
20	Timothy
5	Common Bent Grass
25	Red Fescue
5	Crested Dogstail
Seed rate: 12 Kgs / Acre or 30 Kgs / ha 12 Kgs / Acre Pack	

# OP: Organic Mixes

## OP<sub>1</sub> Overwintered Stubble Mix

NUM2

- This mix will create a winter food source for seed-eating birds and an excellent foraging habitat for small mammals.
- Greatly enhances the number of farmland birds using overwintered stubbles.
- Provides good overwinter stubble management following the harvest of combinable crops.

%	Variety
70	Organic Forage Rape or Organic Mustard
30	R/C Stubble Turnip
Seed rate: 4 Kgs / Acre or 10 Kgs / ha 4 Kgs / Acre Pack	

## OP<sub>4</sub> Organic Multi Species Legume/Grass Ley

NUM2

- This mixture option is based on the results of considerable research and is designed to encourage pollinators and other insects through the inclusion of multiple species and a long flowering period from April until August. The advantage of legumes as a food source for pollinators is also now recognised and this mix means more of us can “do our bit” to encourage pollinators and sustain food production.
- The inclusion of multiple legumes is advantageous as it has been proven to also significantly improve forage yields.
- This complex mixture builds soil fertility and improves inherent soil structure.

%	Variety	%	Variety
23	Organic (Late Dip)	4	Sainfoin
23	Organic (Int Tet)	3	Chicory
12	Organic Red Clover	1	Yarrow
4	Org Meadow Fescue	4	Ribwort Plantain
8	Organic Timothy	3	Burnet
4	Tall Fescue	1	Sheeps Parsley
3	Yellow Trefoil	4	Cocksfoot
3	Alsike Clover		
Seed rate: 14 Kgs / Acre or 35 Kgs / ha 14 Kgs / Acre Pack			

## OP<sub>2</sub> Wild Bird Seed Cover Mix

AHL2

- A 2 year Organic wild bird seed option.
- Sow late spring to early summer to give seed shedding in Autumn and right through the winter for feed. The multi inclusion of species provides feed and cover well in to the second year.
- This mix will attract a range of farmland birds, small mammals and insect life.

%	Variety
65	Organic Triticale/Barley
5	Organic Mustard
3	R/C Kale
4	R/C Quinoa
10	R/C Linseed
10	R/C Fodder Radish
3	R/C Red/White Millet
Seed rate: 20 Kgs / Acre or 50 Kgs / ha 20 Kgs / Acre Pack	

## OP<sub>5</sub> Organic Nectar Flower Mix

AHL1 NUM2

- An exceptional blend designed to provide a varied eco-friendly environment for the proliferation of bird, insect and mammal activity.
- Designed to attract and boost the populations of nectar-feeding insects, including butterflies and bumblebees.

%	Variety	%	Variety
58	Organic Red Clover	10	Sainfoin
8	Organic Timothy	7	Alsike Clover
4	Org Meadow Fescue	2	Black Knapweed
10	Yellow Trefoil	1	Musk Mallow
Seed rate: 6 Kgs / Acre or 15 Kgs / ha 6 Kgs / Acre Pack			

# Wildflowers

## Mixes for a range of soil types and situations

There is not a season of the year when our countryside is not decorated by one or another of the many attractive native wildflower species which flourish in the woods, hedgerows, meadows and marshlands of the U.K.

Thankfully more and more people are recognising the importance of preserving and enhancing our country's wild flora. This has seen a big increase of agri-environmental agreements in recent years encouraging the sowing and re-establishment of many wildflower species.

As a result of this very encouraging agenda, plus a significant rise in general public interest, we have designed a number of options for those planning to establish eco-friendly areas on farmland and other specialist locations.

We can provide mixes for any manner of options, please just ask.

We offer the facility to design your own tailor-made wildflower, herb and indigenous grass mixtures.

### Key Factors to Consider:

- Soil type, fertility and location
- Colour, species diversity, suitability and compatibility in relation to the site in question
- Practicality in terms of overall cost and ease of permanent establishment
- The importance of getting a good balance over time between the different species of wildflowers and grasses
- Creating an environment for all sown flora to be in total harmony with insects, birds and mammals.

# Growing Guide

Establishment of wildflower mixes are not always immediate. Full establishment can sometimes take up to two or three years depending on the competition of the mixture, site conditions, soil type, and husbandry input. Maintenance and management also has a major impact on good establishment.

## Key Factors to Consider:

- **Soil Suitability:**

For all mixtures the soil suitability should be taken in to account. It is helpful if the pH (acidity/alkalinity) of the soil is known, plus knowledge of the soils nutrient content (e.g. P & K).

Wildflower mixtures generally persist well in areas of low fertility. If the soil is highly fertile it may be necessary to remove or strip existing topsoil and sow on to sub-soil.

- **Seed bed preparation:**

This is the most important aspect of wildflower establishment. Whilst annual flowers and grasses will germinate readily, some of the biennial and perennials take longer.

- **Sowing rates:**

Sowing rates vary from 2 to 5 grams per square metre for most grass/wildflower mixtures. For mixture specific sowing rate details please get in touch. Beware of sowing at a lower rate than is necessary as this can allow weed ingress.

- **When to sow:**

A good time for sowing mixtures is generally considered to be late summer or early autumn when seeds are shed naturally, the soil is warmer and moisture is usually present in sufficient quantity to aid good germination. Annual flower mixtures sown in early autumn should flower from May/June the following year.

Double sowings, one in autumn and one in spring on the same site produce prolonged colour throughout the summer and autumn. It may be necessary to re-seed areas of annual wildflowers at a reduced seeding rate in the autumn of the year of flowering in order to maintain the diversity of species and colour over a longer period of time.

The window in spring or early summer is also a viable period to sow wildflower/grass mixtures. Consideration must be made at this time for potentially greater weed competition in the seed-bed and possibly experiencing sustained dry periods. Both factors can at times be detrimental to strong and full establishment.

- **Management and Maintenance:**

As a meadow develops, the annual flowers can disappear or reduce in number whilst the perennials become more prominent. It is possible to overseed with annuals. Areas must be cleared of cover prior to seeding.

It is not recommended to fertilise as this will reduce the vitality of the herb and flower content of the meadow. (Light stock grazing will fertilize naturally although it may be necessary to lightly harrow after spring graze to drag and spread manure evenly over the field.)

Germination of wildflower seeds can be erratic and some species require vernalisation before germination in spring of the following year, (i.e. a period of prolonged cold temperatures). Maintenance in the first year after sowing should be restricted to a high cut in late summer. This can then be followed by an early spring cut in the second year to remove any debris.

If the intention is to take a hay crop in the second year, a light graze or topping in the spring should be followed by shutting off to allow full development of the crop, and maximise seed shedding of all species.

If hay is taken, it is not usual to graze the aftermath. A topping in late autumn should tidy the area. The aftermath can be lightly grazed to tidy only after full re-growth has taken place. (Meadow mixtures that are heavily grazed tend to revert to a pure grass sward after a period of time – so avoid aftermath grazing by livestock to preserve the wildflower/herb content).

According to Government figures Over 97% of wildflower meadows have been lost since the 1930s with flower-rich grassland now only covering a mere 1% of the UK's land area.

Please work with Idealseed to re-establish our wildflowers in meadows & domestic gardens.

Idealseed provide wildflower seed mixture "fit for purpose" **Our Wildflower seeds** range comprises of **Native British wildflower seeds**. We also specialise in bespoke mixtures of native wildflower species. We also blend to any specification or wildflower mix you may require.

The definition of UK native seed is: **British native-origin** seed refers to seed originally collected from wild populations in Great Britain (from sites with no known history of sowing of amenity or agricultural varieties) and either sown directly or grown on as a field crop to provide further seed. It includes seed collected in 'green hay'. It excludes certified amenity or agricultural varieties of native species.

#### "A few facts on our cherished BEES"

1. £690 million is the mind-boggling amount that insect pollination is worth to UK crops each year. 76% of globally important commercial crops depend on insect pollination, which equates to 1 in 3 mouthfuls of food!
2. The "waggle dance" is used by bees to teach each other about the direction and location of food sources over 6 kilometres away. Known as 'a sat nav for bees', the bees perform precise movements to tell other bees in the hive exactly where they have found their fantastic new wildflower source!
3. The average hive produces about 11kg of honey during a season! That's the equivalent of about 24 jars. Bees must fly about 55,000 miles just to make one pound of honey (which is less than half a kilo!)
4. **The power of wildflowers for bees**

Bees like variety, and worker honeybees are no different. These powerful pollinators travel up to 20km a day to seek out delicious nectar, they look for a flowerful feast of all shapes, sizes, and heights. Their foraging radius is about three miles – making wildflowers perfect for them. If more of us had just a small area of wildflowers by our back door, we create the opportunity for bees to get as many nutrients as possible within good distance.



MY  
GRANDSON  
JACK

**"WE FOCUS ON THE FUTURE OF THE NEXT GENERATION"**

**Billy Nimmo**  
Managing Director  
Idealseed



## 80/20% v 100% Ratio

All our mixtures are supplied with (OR) without Grasses:

### Either 100% Wildflower mixtures without Grasses Or Our most popular 80% Grasses and 20% Wildflowers.

If you select 80/20% it's called a "nurse crop" and usually takes the form of an open growing non-competitive seed mixture. Given the correct future maintenance, this nurse crop will gradually form a smaller and smaller contingent of the sward, being replaced by the wildflowers as they establish and mature. If, however, the seed is being sown on a small area, perhaps in a garden where weed control will not be a problem then the cover crop can be omitted, and 100% wildflower mixture sown.

Full mixture contents can be viewed by visiting: [www.idealseed.co.uk](http://www.idealseed.co.uk)

### MIXTURE: BEE & BUTTERFLY

Mixture creates a grass and wildflower meadow attractive to bees, butterflies, and other pollinators.

Bright and beautiful British native wildflowers, formulated to provide maximum food source for bees and butterflies, whilst creating a visually attractive meadow. Carefully formulated to include twenty species from the Royal Horticultural Society "Plants for Pollinators" list, inc. yellow rattle.



### MIXTURE: DUAL PURPOSE (70/30% version)

Use this wildflower mixture to provide colour in the first year, as well as a long-lasting grass and wildflower meadow. Includes yellow rattle.

Contains 30% British native wildflowers and 70% grasses, designed for impact in the first year after sowing, as well as longevity. First year colour from 10% of bold cornfield annuals, followed by 20% of perennials which will begin flowering in the second year.



### MIXTURE: LIGHT SHADE & SANDY SOIL

Use this mixture to establish wildflowers and grasses in areas of partial and semi shade, such as hedgerows or other areas in sunlight for only part of the day. Contains twenty-two British native wildflower species, including Cowslip, Foxglove, Dark Mullein and Common St John's-Wort.

Species in this mixture are frequently found in hedgerows, woodland edges, clearings, and open woods. Can also be sown in partial shade; hedge bottoms, tree plantations.



## MIXTURE: HEAVY SHADE & WOODLAND

Use this mixture to establish wildflowers and grasses in areas of dense shade, such as woodland and areas in shade for much of the day. Contains twenty-four British native wildflower species, including Nettle-leaved Bellflower, Bluebell, Meadowsweet and Tufted Vetch.

Species in this mixture are frequently found in wooded areas, alongside woodland edges and in clearings. Shade may be heavy or prolonged.



## MIXTURE: WETLAND & POND EDGE

Use this mixture to establish wildflowers and grasses alongside waterways, ponds, and other wetland areas. Contains twenty-two British native wildflower species, including Water Avens, Yellow-flag Iris, Ragged Robin, and Common Sedge.

Species in this mixture are frequently found in grassland alongside streams, ponds and rivers and will also thrive in wet low-lying land. Avoid sowing if there is imminent risk of flooding.



## MIXTURE: COASTAL DRY SOIL

Use this mix to establish a natural wildflower and grass meadow in coastal areas on sandy or calcareous loams. Contains nineteen British native wildflower species, including Haresfoot Clover, Yellow-rattle, evening Primrose, Common Toadflax, Goat's-beard.

Species in this mixture are frequently found in coastal areas that contain sandy loams, stony loams, or calcareous loams. Able to tolerate moderate salinity.



## MIXTURE: CORNFIELD ANNUAL

Use this mixture to create a bold display of British annual wildflowers along with or without grasses.

Contains five native wildflower species, including Corn Chamomile, Corn Cockle, Cornflower, Corn Marigold, and Common Poppy which provide very quick establishment.

The annual species included could be found in most cultivated soils and disturbed areas. They can be sown in a situation where 'instant' colour is required, or combined with other mixtures containing perennial species when flowers are required during the first year.



## MIXTURE: LOW GROW

Use this mixture to create a lower growing area of grass and wildflowers, ideal for flowering lawns or where important not to inhibit visibility. Contains a blend of twenty low growing wildflower species, including Forget Me Not, Yellow Rattle, Cowslip, Bladder Campion, and Ragged Robin.

Formulated to contain only lower growing species, perfect for areas where it is important not to restrict visibility such as roadside verges & roundabouts.



**For full information on our wildflower seed mixtures**

**VISIT [www.idealseed.co.uk](http://www.idealseed.co.uk)**



# Catch Crops

## High quality root seed mixtures giving top 'in field' performance

The range of catch crop mixtures are specifically designed to provide green feed and bumper crops of highly nutritional dry matter for ruminant livestock.



## Catch Crop

### Contains (per acre):

35% Forage Rape R/C

65% Samson / Delilah Stubble Turnips R/C

### Packed in 5kgs per 2 Acre Pack

- Sow at 2 to 3 kilos per acre (dependant on whether broadcasting or drilling) Packed in multiples of 5 kilo packs.
- Sowing window: May to very late August.
- Optimum utilisation period starts at 10 to 12 weeks from sowing.
- Best suited to sheep enterprises - i.e. finishing lambs, or as late autumn and early/mid winter sheep keep.
- Ideal for sequential sowing, to provide liberal levels of D.M. forage when grass quality subsides and to feed "in situ" at the onset of winter.

## Maxi Leaf

### Contains (per acre):

35% Interval (Hybrid Kale X Rape) R/C

50% Forage Rape R/C

15% Kale Seed (Thiram)

### Packed in 5kgs per 2 Acre Pack

- Primarily for Cattle.
- Sow at 2 to 2.5 kilos per acre. Packed only in multiples of 5 kilo packs.
- Sowing window: May to mid August.
- Optimum utilisation period starting at 9 to 11 weeks from sowing.
- Best suited for beef cattle, young stock or dairy farmers.
- Ideal for droughty locations where grass is short in summer or early autumn.

## Rapid Crop

### Contains (per acre):

31.25% Forage Rape R/C

6.25% Kale Seed (Thiram)

12.50% Red Clover

12.50% Fodder Radish R/C

6.25% Green Globe Turnip R/C

31.25% Mustard Seed R/C

### Packed in 5kgs per 1 Acre Pack

- Sow at 4 kilos per acre. Packed in 4 kilo (one acre) packs.
- Sowing window: Late April to mid August.
- Designed initially to provide a very quick dense cover for game crop areas, but the mixture's flexibility means it can also double up as a livestock feed.
- A superb "Planning" choice on the unit where game crops and livestock enterprises are managed alongside each other.
- Finally, an excellent "Fire brigade" patching option for areas where other game crops have not established so well.

## 'Mid' Winter Keep

### Contains (per acre):

15% Interval (Hybrid Kale X Rape) R/C

15% Green Globe Turnip R/C

45% Samson / Delilah Stubble Turnips R/C

25% Kale Seed (Thiram)

### Packed in 5kgs per 2 Acre Pack

- Sow at approx 2 kilos per acre. Packed in 4 kilo packs, i.e. 2 acre packs.
- Ideal sowing window: Early June to mid August.
- This gives an optimum utilisation period of late autumn through to late January/ early February.
- Principally a winter based sheep keep mixture that is cheap to establish and gives an abundant quantity of green feed from late October/ November onwards.

## Late Winter Keep

### Contains (per acre):

45%	Interval (Hybrid Kale X Rape) R/C
25%	Samson / Delilah Stubble Turnips R/C
15%	Kale Seed (Thiram)
15%	Green Globe Turnip R/C

Packed in 5kgs per 2 Acre Pack

- Best sown at approx 2.5 kilos per acre (Packed in 5 kilo packs)
- Sowing window of late May to early August (i.e. ideal after ploughed out leys, after winter barley or wholecrop)
- The best planned utilisation period is from late December through to late March
- The mixture contains highly durable brassicae species most suited to mid/late winter sheep keep management
- Timing of utilisation is obviously influenced by sowing date but remember, for best establishment, sow by late July if possible
- Fills the “Hungry Gap” period in winter and is primarily designed for sheep systems
- Out-wintered cattle can also perform extremely well on the Supreme Late Winter Keep mixture

### Yield Potential:

	DM/Ha	CP%	D-Value
Stubble Turnips	4.5t	17	69
Maincrop Turnips	6.0t	9	80
Swede	8.5t	11	82
Fodder Beet	14.0t	12	78
Kale	9.0t	17	68
Forage Rape	4.5t	19	68
Hybrid Rape/Kale	6.0t	19	68

# Cover Crops

Cover crops are fast becoming a beneficial way to avoid the reliance on inputs such as fertilisers and now play a crucial role in sustainable agriculture.

The benefit of improving soil structure and fertility is becoming more important when relating to climate change and the uncertainty that comes with it.

As more research goes into cover cropping, we are seeing the positive effects it has on crop yields, and this further underlines the importance of investing in the practice.

Pest management, reduced stress on main crops, and increased biodiversity all contribute to the growing importance of cover crops, particularly in arable farming.

## Cover Crop / Greening Mixtures

### Booster

A non brassicae mix providing rapid cover, N and soil OM enhancement.

Contains 12.00kg per pack:

Vetch	Persian Clover
Black Oats	Berseem Clover
Phaceila	

Sow at approx 12kg/acre (30kg/hectare)

### Flyer

A low cost Brassicae mixture, giving extremely quick growth and ground cover. Superb root development helps to maximize bio-mass in the short term. Excellent results in terms of a sizeable DM contribution with potential livestock utilisation.

Contains 4.00kg per pack:

Interval (Kale X Rape)	Mustard
Green Glove / Stubble Turnip	Oil / Fodder Radish

Sow at approx 4kg/acre (10kg/hectare)

## Decoy

Rapid cover provided with nematode multi resistant components, plus impressive soil structure improvement.

Contains 8.00kg per pack:

Oil Radish (multi-resistant)	Mustard
Phacelia	Berseem Clover

Sow at approx 8kg/acre (ie 20kg/hectare)

## Companion

A specialist blackgrass control mixture for sowing into Winter Rape. Trapsley nutrients (inc. Nitrogen), improves soil porosity and friability. Evidence of reduced Slug + Fleabeetle activity by using this mixture type, plus reduction of grass weed populations.

Contains 20.00kg per pack (packed in 2 acre packs):

Vetch	Berseem Clover
-------	----------------

Sow at approx 6kg/acre (ie 15kg/hectare)

## Panbusters

Two exceptional, yet economic, mixtures. Designed to improve sub surface drainage via root penetration whilst at the same time enhancing soil organic matter and residual N status.

P.B. (1) Contains 8.00kg per pack (packed in 2 acre packs):

Tillage Radish	Berseem Clover
----------------	----------------

Sow at approx 4kg/acre (ie 10kg/hectare)

P.B. (2) Contains 9.00kg per pack (packed in 2 acre packs):

Tillage Radish	Oil / Fodder Radish
Berseem Clover	

Sow at approx 4.5kg/acre (ie 11.25kg/hectare)

## Marvel

An economically priced multi-purpose, non-Brassicae mix, Marvel certainly ticks all the boxes in terms of achieving major greening objectives.

Contains 12.00kg per pack:

Vetch	Crimson Clover
Persian Clover	Black Oats
Phacelia	

Sow at approx 4kg/acre (ie 10kg/hectare)

## Follower

Sow early into autumn stubbles, prior to planned spring cropping. Combines both exceptional growth with excellent extra overall bio mass contribution. Helps improve soil structure, particularly on heavier soils. Critically this mixture encourages grass weed (inc. Blackgrass) to establish in autumn within the sowncover crop. They can then be subsequently destroyed prior to spring sowing.

Contains 20.00kg per pack (packed in 2 acre packs):

Vetch	Black Oats
-------	------------

Sow at approx 10kg/acre (ie 25kg/hectare)

The range covers most growers' needs and choices. However, sometimes there is a **REQUIREMENT FOR SPECIALIST MIXTURES**.

Remember, we are only too happy to oblige. If something is not detailed here or maybe other species for inclusion are wanted then just ask us to competitively produce your special mix requirements for you.

For further advice on all the best usage of all the above and appropriate seed rates, please ask for help.



# Game Cover

## Premium Game Cover

A high quality all purpose game mixture providing full season cover. Provides a range of food sources to attract both big and small birds. Robust and varied in its cover, making it a must for quality shoots.

Contents:	Kgs / Acre Pk
Sunflower	2.00
Buckwheat	3.50
Kale Seed	0.50
Maize Seed	2.00
Millet	1.50
Linseed	1.75
Vetches	1.75
Mustard	1.00
<b>Seed rate: 14.00 kgs per acre pk</b>	

## Economy Game Cover

An exceptional mixture designed for rapid establishment at a sensible cost. An ideal choice for a limited budget or larger shoots with many acres to seed regularly. It creates a variety of cover types and provides a good mixture of food sources for all game bird types.

Contents:	Kgs / Acre Pk
Buckwheat	3.00
Forage Rape	0.75
Sunflower	1.50
Kale Seed	0.25
Linseed	1.50
Millet	3.00
Vetches / Tares	2.50
<b>Seed rate: 12.50 kgs per acre pk</b>	

## Quinoa / Kale

A specialist blend of hardy Kale varieties, plus Quinoa. Provides both excellent cover and a high protein feed source via Quinoa. Suitable as a game strip on the field margins of arable land. It can also be used for Stewardship purposes. Our S.Q.K. mix is supplied in 5lb packs at a realistic seed rate, providing real value for money.

Contents:	Kgs / Acre Pk
Quinoa	1.00
Inka	0.50
Protect / Burley	0.75
<b>Seed rate: 2.25 kgs per acre pk</b>	

It can be sprayed with a residual herbicide pre-drilling but there is some risk to the Quinoa content.

## Extra Hardy

A proven game cover blend for harsher sites and very open locations. Ideally suited to sporting estates and shoots in the North and Scotland.

A generous seed rate is recommended in order to ensure good, strong cover on known sites where establishment is often difficult.

Extra Hardy provides excellent cover and a diverse food source for birds.

Contents:	Kgs / Acre Pk
-----------	---------------

Tic Beans	4.00
-----------	------

Vetches	3.00
---------	------

Buckwheat	4.75
-----------	------

Yellow Blossum Clover	1.25
-----------------------	------

Triticale (Spring type)	8.00
-------------------------	------

Linseed	2.50
---------	------

Kale Seed	0.50
-----------	------

<b>Seed rate: 24.00 kgs per acre pk</b>	
---	--

Best sown from late April to mid June and can be utilised for brooding.

## Rapid Crop

An outstanding blend specifically designed to provide quickly established, dense cover. Wide ranging sowing dates from May to mid/late August. Very useful to patch up earlier sown failures. It can double up as a livestock feed mixture, giving the user flexibility in planning cover and catch crops across a mixed unit.

Exhibits good drought tolerance. Shows versatility to broadcasting into standing cereal crops or onto winter cereal stubbles. The inclusion of fodder radish assists against Club Root, (brassicacae sickness), and boosts rapid establishment and therefore cover.

Contents:	Kgs / Acre Pk
-----------	---------------

Forage Rape	1.25
-------------	------

Kale Seed	0.25
-----------	------

Red Clover	0.50
------------	------

Fodder Radish	0.50
---------------	------

Texel Greens / Green Globe Turnip	0.25
--------------------------------------	------

Mustard	1.25
---------	------

<b>Seed rate: 4.00 kgs per acre pk</b>	
--	--

Could be sprayed with a residual herbicide pre-drilling, with some risk to the clover.

## Nesting

Nesting mix is primarily chosen for longer-term use - minimum 2 to 3 years. Provides good accessible cover, particularly for smaller birds such as Partridge. Alternatively it can be sown around duck ponds and surrounding areas. Contains nectar producing plants that attracts an array of insects and small range mammal species compatible to small bird life.

- This mixture has a wide sowing window and can be sown from late March to early August, dependent on seed bed conditions and soil temperatures.

- After full establishment, we advise a very light 'topping' at the end of year one, to prevent lush growth in winter and possible plant kill.

Contents:	Kgs / Acre Pk
-----------	---------------

Sweet Yellow Blossom Clover	1.25
-----------------------------	------

Longer term Red Clover	1.50
------------------------	------

Crested Dogstail	1.00
------------------	------

Canary Grass (P, Aquatica)	0.75
----------------------------	------

Sainfoin	2.75
----------	------

Timothy Grass	0.75
---------------	------

Cocksfoot	0.50
-----------	------

<b>Seed rate: 8.50 kgs per acre pk</b>	
--	--

Post emergence weed control available.

## Bird Cover

A specialist small bird mix, ideal for Partridge and Quail. Produces an exceptionally good lower level cover that provides quality feed too. Establish from late April onwards. Very good performance over a range of differing sites and locations and is perfect cover for smaller species.

- Provides an excellent varied food source throughout the shooting season.

- Gives reasonable winter hardiness, whilst allowing easy access and therefore quality protection for smaller birds.

Contents:	Kgs / Acre Pk
-----------	---------------

Mustard	0.25
---------	------

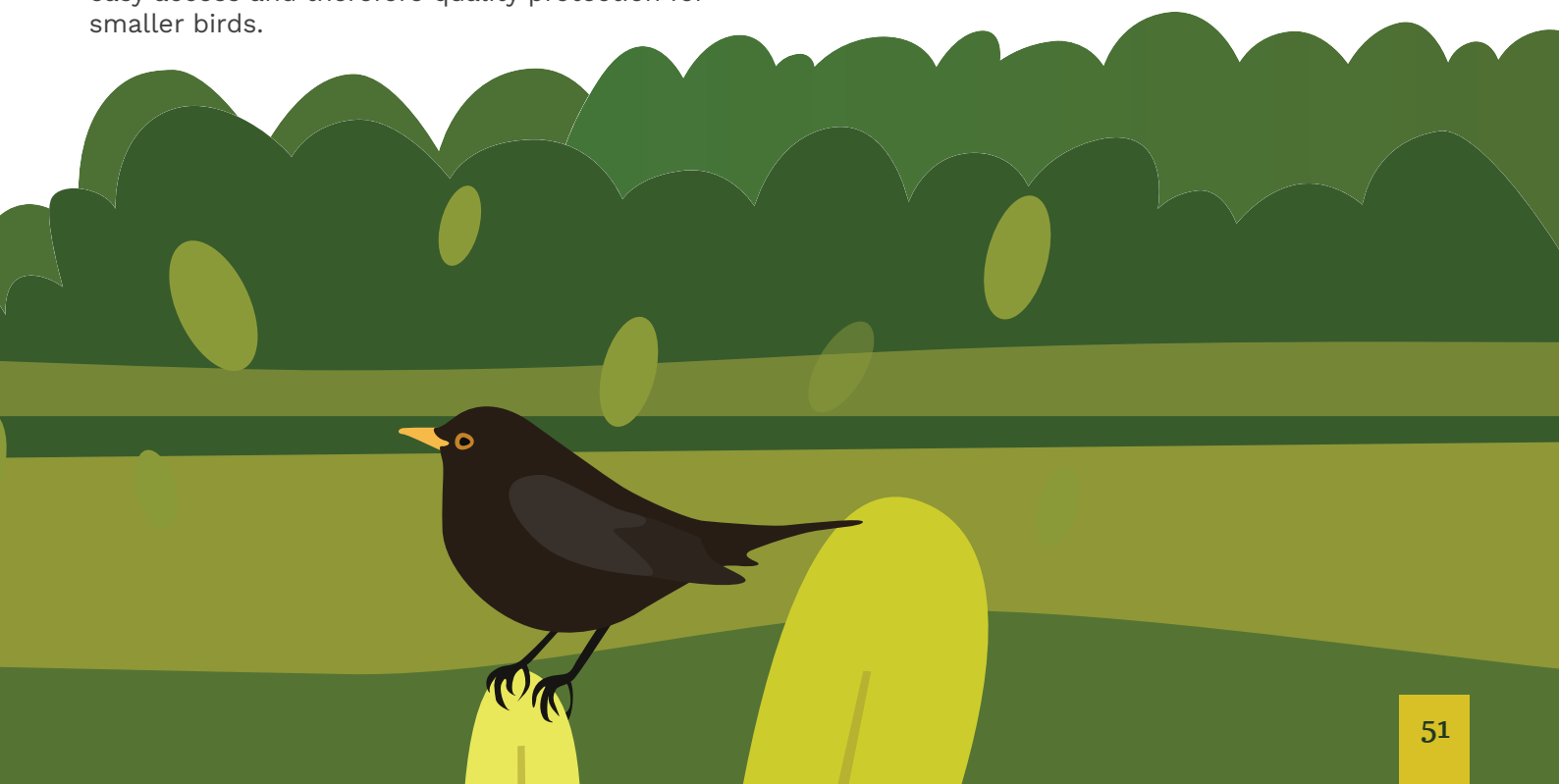
Linseed	5.50
---------	------

Red/White Millet	3.00
------------------	------

Vetches	2.75
---------	------

Kale/Rape Hybrid	0.50
------------------	------

<b>Seed rate: 12.00 kgs per acre pk</b>	
---	--



# IDEALSEED PRICELIST

## PRICELIST INDEX

IDS CONVENTIONAL FORAGE  
IDS ORGANIC FORAGE  
IDS EQUINE & Paddock

IDS LAWN & LANDSCAPING  
IDS SPORT & RECREATION  
IDS CS & SFI SCHEMES  
IDS ENVIRONMENT SCHEMES

IDS NATIVE BRITISH WILDFLOWERS

IDS CATCH CROP  
IDS COVER CROP

IDS GAME COVER  
IDS WILD BIRD FEED

**Prices are inclusive of carriage**

**Place your order 07920 546426 [billy@idealseed.co.uk](mailto:billy@idealseed.co.uk)**

We reserve the right to supply varieties of similar or better merit, should stocks become unavailable.

<b>PRODUCT LANDSCAPING</b>	<b>Sowing Rate</b>	<b>Pack Size</b>	<b>10-15 Acres</b>	<b>16 – 40 Acres</b>	<b>16 – 40 Acres</b>	<b>41+ Acres</b>
IDS2000 Greenspeed Economy Landscape	35g/ m2	20.00 Kg	£62.00	£60.00	£58.00	£57.00
<b>PRODUCT AGRICULTURAL</b>	<b>Sowing Rate</b>	<b>Pack Size</b>	<b>1 - 9 Acres</b>	<b>10 - 15 Acres</b>	<b>16 - 40 Acres</b>	<b>41+ Acres</b>
IDEAL XL Short-Term	15.00 Kg	15.00 Kg	£67.25	£45.25	£43.25	£41.25
IDEAL SUPERMO Medium-Term	14.00 Kg	14.00 Kg	£62.00	£46.50	£44.50	£43.50
IDEAL MULTIMO Medium-Term	14.00 Kg	14.00 Kg	£67.50	£51.10	£49.10	£48.10
IDEAL NITROMO Medium-Term	13.50 Kg	13.50 Kg	£85.60	£55.30	£53.30	£52.30
IDEAL SUPREME Long-Term Dual P.	14.00 Kg	14.00 Kg	£84.85	£57.60	£55.60	£54.60
IDEAL HIGHLAND Permanent Pasture	14.00 Kg	14.00 Kg	£85.40	£58.30	£56.30	£55.30
IDS FOUNDATION Long-Term Grazing	14.00 Kg	14.00 Kg	£86.45	£59.45	£57.45	£56.45
<b>PRODUCT AGRICULTURAL</b>	<b>Sowing Rate</b>	<b>Pack Size</b>	<b>1 - 3 Acres</b>	<b>4 - 8 Acres</b>	<b>9 - 15 Acres</b>	<b>16+ Acres</b>
IDEAL Long-Term Herbal Mixture	14.00 Kg	14.00 Kg	£83.50	£78.50	£74.50	£72.50
IDEAL Long-Term Economy Herbal	14.00 Kg	14.00 Kg	£80.50	£75.50	£71.50	£69.50
<b>PRODUCT EQUINE</b>	<b>Sowing Rate</b>	<b>Pack Size</b>	<b>1 - 3 Acres</b>	<b>4 - 8 Acres</b>	<b>9 - 15 Acres</b>	<b>16+ Acres</b>
Short-term Hay & Haylage	13.50 Kg	13.50 Kg	£64.00	£61.00	£56.00	£54.00
Long-term Hay & Haylage	13.50 Kg	13.50 Kg	£64.00	£61.00	£56.00	£54.00
Horse & Pony	13.50 Kg	13.50 Kg	£66.50	£63.50	£58.50	£56.00
Laminitis's non-Rye	13.00 Kg	13.00 Kg	£72.00	£69.00	£64.00	£57.50
SUPREME Overseeding	13.00 kg	13.00 kg	£52.50	£49.50	£44.50	£42.50
100% Herbal Strip	2.00 Kg	1.00 Kg	£24/kg	£22.00	£20.00	£19.00

**Prices are inclusive of carriage**

**FAST DELIVERY**

We reserve the right to supply varieties of similar or better merit, should stocks become unavailable.

<b>PRODUCT ORGANIC FARM</b>	<b>Sowing Rate</b>	<b>Pack Size</b>	<b>5 - 9 Acres</b>	<b>10 - 15 Acres</b>	<b>16 - 39 Acres</b>	<b>40+ Acres</b>
ORGANIC Range Clover Rich	12.00 Kg	12.00 Kg	£69.00	£63.00	£59.00	£58.00
ORGANIC Range Short-Term	12.50 Kg	12.50 Kg	£72.00	£67.00	£63.00	£60.00
ORGANIC Range Medium-Term	13.50 Kg	13.50 Kg	£79.50	£73.50	£69.50	£68.50
ORGANIC Range Perma-Graze	13.50 Kg	13.50 Kg	£83.50	£77.50	£73.50	£72.50
ORGANIC Range Permanent	14.00 Kg	14.00 Kg	£84.00	£79.00	£75.00	£74.00
ORGANIC Range Super-Cut L/Term	14.00 Kg	14.00 Kg	£84.50	£79.50	£65.50	£74.50
<b>PRODUCT LAWN &amp; PARKS</b>	<b>Sowing Rate</b>	<b>5.00 Kg Pack</b>	<b>10.00 Kg Pack</b>	<b>20.00Kg Pack</b>	<b>Min Order</b>	
SUPREME Gold Prestige	25g/ m2	£31.50	£52.50	£95.00	5kg	
SUPREME Fine & Luxurious	25g/ m2	£29.50	£47.50	£85.00	5kg	
SUPREME Hard-Wearing	35g/ m2	£28.00	£45.00	£80.00	5kg	
SUPREME Slow Grow	35g/ m2	£30.00	£49.00	£88.00	5kg	
SUPREME Shaded Areas	35g/ m2	£30.00	£49.00	£88.00	5kg	
SUPREME Economy Lawn	35g/ m2	£27.50	£42.50	£75.00	5kg	
<b>PRODUCT SPORTS &amp; GOLF</b>	<b>Sowing Rate</b>	<b>5.00 Kg Pack</b>	<b>10.00 Kg Pack</b>	<b>20.00Kg Pack</b>	<b>Min Order</b>	
SUPREME Sports Pitch	50g/ m2	N/A	£46.50	£83.00	80Kg	
SUPREME Sports Renovation	25g/ m2	N/A	£45.00	£79.50	80Kg	
SUPREME Golf/Bowl Greens	10g/ m2	N/A	£60.00	£105.00	80Kg	
SUPREME Cricket Wicket	35g/ m2	N/A	£50.00	£90.00	80Kg	
SUPREME Outfield/Fairways	35g/ m2	N/A	£50.00	£90.00	80Kg	

**Prices are inclusive of carriage**

**Place your order 07920 546426 [billy@idealseed.co.uk](mailto:billy@idealseed.co.uk)**

We reserve the right to supply varieties of similar or better merit, should stocks become unavailable.

# Countryside Stewardship Scheme & Sustainable Farming Incentive

AB / GS / HS / SW / OP / AHL / NUM / SAM

PRODUCT CSS & SFI Environment	SCHEME	Pack Size	Sowing Rate/Acre	Price per Acre/Pk	Min Order
Nectar Flower + Vetch & Lucerne	AB1 AHL1 NUM2	5.00kg	5.00kg	£52.00	4 Packs
Beetle Bank Mixture	AB3 NUM2 AHL3 AHL4	8.00kg	8.00kg	£43.50	4 Packs
Flower Rich Margins 10% Species	AB8 NUM2 IPM2	8.00kg	8.00kg	£75.00	4 Packs
One Year Wild Bird + Sunflower	AB9 AHL2 NUM2	20.00kg	20.00kg	£50.00	3 Packs
Two Year Wild Bird	AB9 AHL2 NUM2	20.00kg	20.00kg	£59.00	5 Packs
Two Year Wild Bird + Sunflower	AB9 AHL2 NUM2	20.00kg	20.00kg	£59.00	5 Packs
Winter Wild Bird Supplement	AB12 T.B.A.	T.B.A.	T.B.A.	T.B.A.	T.B.A.
Two Year Legume Fallow - No grass	AB15 NUM2 NUM3	20.00kg	10.00kg	£48.50	5 Packs
Eco Two Year Legume Fallow - No grass	AB15 NUM2 NUM3	20.00kg	10.00kg	£45.00	5 Packs
Autumn Sown Bumble Bird	AB16 NUM2	20.00kg	50.00kg	£65.00	5 Packs
Ryegrass Seed Set/ Winter Bird	GS3 NUM2	15.00kg	15.00kg	£61.00	6 Packs
Legume & Herb Rich Sward	GS4 SAM3 NUM2	14.00kg	14.00kg	£70.00	6 Packs
Legume & Herb Rich Sward - No Grass	GS4 SAM3 NUM2	6.00kg	6.00kg	£44.00	10 Packs

**Prices are inclusive of carriage**

**FAST DELIVERY**

We reserve the right to supply varieties of similar or better merit, should stocks become unavailable.

# Countryside Stewardship Scheme & Sustainable Farming Incentive

AB / GS / HS / SW / OP / AHL / NUM / SAM

PRODUCT CSS & SFI Environment	SCHEME	Pack Size	Sowing Rate/Acre	Price per Acre/Pk	Min Order
Species Rich Grassland - Legumes & Wildflowers	GS* (i) NUM2	16.00kg	16.00kg	£95.00	6 Packs
Species Rich Grassland - Grass Only	GS* (ii) NUM2	16.00kg	16.00kg	£85.00	6 Packs
Historic, Enviro & Monuments Long-Term (shallow Rooted)	HS9 (A) NUM2	16.00kg	16.00kg	£66.00	6 Packs
Shallow Rooted Over Winter - Reduce Soil Erosion	HS9 (B) NUM2	16.00kg	16.00kg	£56.00	6 Packs
4 & 6 Metre Grass & Buffer Strip	SW1 AHL4 NUM2	10.00kg	10.00kg	£53.00	6 Packs
Watercourse Buffer Strip + Cultivated Land	SW4 AHL4 NUM2	10.00kg	10.00kg	£51.00	6 Packs
Arable Reversion + Grassland Recreation	SW7 AHL4 NUM2	12.00kg	12.00kg	£61.00	6 Packs
ORGANIC Over Winter Stubble	OP2 AHL2	4.00kg	4.00kg	£39.00	10 Packs
ORGANIC Wild Bird Seed Cover	OP2 AHL2	20.00kg	20.00kg	£70.00	5 Packs
ORGANIC multi-species - Legumes & Grasses	OP4 SAM3 NUM2	14.00kg	14.00kg	£84.00	6 Packs
ORGANIC Nectar Flower For nectar-feeding insects	OP5 AHL1 NUM2	6.00kg	6.00kg	£82.00	5 Packs

Prices are inclusive of carriage

Place your order 07920 546426 [billy@idealseed.co.uk](mailto:billy@idealseed.co.uk)

We reserve the right to supply varieties of similar or better merit, should stocks become unavailable.





# Native Wildflower Seed Range

PRODUCT IDS WILDFLOWER SEED MIXTURES				
IDS WILDFLOWER SEED MIXTURES	Sowing	250g	1.00kg	5.00+kg
I-DS BEE & BUTTERFLY	4-5g/m2	£29.00	£49.00	£47.00
I-DS DUAL PURPOSE 70/30%	4-5g/m2	£27.00	£46.00	£44.00
I-DS LIGHT SHADE	4-5g/m2	£29.00	£58.00	£56.00
I-DS HEAVY SHADE	4-5g/m2	£39.00	£58.00	£56.00
I-DS WETLAND & POND EDGE	4-5g/m2	£39.00	£58.00	£56.00
I-DS COASTAL DRY SOIL	4-5g/m2	£39.00	£58.00	£56.00
I-DS CORNFIELD ANNUAL	4-5g/m2	£22.00	£41.00	£39.00
I-DS LOW GROWING	4-5g/m2	£39.00	£58.00	£56.00
100% Native British Wildflower Seed	Sowing	250g	1.00kg	5.00+kg
I-DS BEE & BUTTERFLY	2-3g/m2	£49.00	£136.00	£133.00
I-DS DUAL PURPOSE	2-3g/m2	£49.00	£136.00	£133.00
I-DS LIGHT SHADE	2-3g/m2	£56.00	£154.00	£151.00
I-DS HEAVY SHADE	2-3g/m2	£56.00	£154.00	£151.00
I-DS WETLAND & POND	2-3g/m2	£56.00	£154.00	£151.00
I-DS COASTAL & SANDY	2-3g/m2	£56.00	£154.00	£151.00
I-DS CORNFIELD	2-3g/m2	£31.00	£68.00	£65.00
I-DS LOW GROWING	2-3g/m2	£56.00	£154.00	£151.00

Prices are inclusive of carriage

**FAST DELIVERY**

We reserve the right to supply varieties of similar or better merit, should stocks become unavailable.

## Catch Crop Range

PRODUCT CATCH CROP	Sowing Rate	Pack Size	1-9 Packs	10-24 Packs	25-49 Packs	50+ Packs
IDS Standard Catch Crop	2.50 Kg	5.00 Kg	£29.75	£29.00	£28.50	£28.25
IDS Maxi-Leaf Catch Crop	2.50 Kg	5.00 Kg	£38.75	£38.00	£37.50	£37.25
IDS Rapid Grow Catch Crop	2.50 Kg	5.00 Kg	£37.50	£37.00	£36.50	£36.25
IDS Mid-Winter Keeper Crop	2.50 Kg	5.00 Kg	£41.00	£40.25	£39.75	£39.50
IDS Late Winter Keeper Crop	2.50 Kg	5.00 Kg	£40.50	£39.75	£39.25	£39.00

**Above prices are per 5.00 Kilo pack**

Our Catch Crops range of fast-growing mixtures are formulated for growing between successive plantings of a main crop. Catch crops are abundant with brassicas, providing out-of-season dry matter (DM) for ruminant livestock.

## Cover Crop & Game Cover Ranges

PRODUCT COVER CROP	Sowing Rate/Acre	Pack Size	(£) Per Acre	Min Order
IDS BOOSTER	12.00Kg	24.00Kg	£33.00	5 Packs
IDS DECOY	8.00Kg	16.00Kg	£30.00	10 Packs
IDS DECOY + Brown Mustard (Nematode-Resistant)	8.00Kg	16.00Kg	£31.50	10 Packs
IDS MARVEL	12.00Kg	24.00Kg	£32.00	10 Packs
IDS FLYER	4.00Kg	16.00Kg	£24.00	10 Packs
IDS COMPANION	6.00Kg	12.00Kg	£27.00	10 Packs
IDS FALLOWER	10.00Kg	20.00Kg	£30.00	5 Packs
IDS PANBUSTER ONE	4.00Kg	16.00Kg	£22.00	10 Packs
IDS PANBUSTER TWO	4.50Kg	18.00Kg	£25.00	10 Packs

**Prices are inclusive of carriage**

**Place your order 07920 546426 [billy@idealseed.co.uk](mailto:billy@idealseed.co.uk)**

We reserve the right to supply varieties of similar or better merit, should stocks become unavailable.

## Cover Crop & Game Cover Ranges

PRODUCT GAME COVER	Sowing Rate/Acre	Pack Size	(£) Per Acre	Min Order
IDS PREMIUM GAME COVER	14.00Kg	14.00Kg	£53.00	4 Packs
IDS ECONOMY GAME COVER	14.00Kg	14.00Kg	£50.50	4 Packs
IDS KALE/QUINOA BLEND	2.50Kg	5.00Kg	£31.00	4 Packs
IDS EXTRA HARDY Northern Cover	24.00Kg	24.00Kg	£56.50	4 Packs
IDS RAPID CROP COVER	4.00Kg	8.00Kg	£30.00	4 Packs
IDS 2 – 3 Years NESTING BIRD	8.00Kg	16.00Kg	£53.00	4 Packs
IDS SMALL BIRD COVER	12.00Kg	24.00Kg	£42.00	4 Packs

Above prices are per ACRE pack

Prices are inclusive of carriage

**FAST DELIVERY**

We reserve the right to supply varieties of similar or better merit, should stocks become unavailable.

[www.idealseed.co.uk](http://www.idealseed.co.uk)



DIRECT DIAL:  
**07920 546 426** 

Email: [billy@idealseed.co.uk](mailto:billy@idealseed.co.uk)

[www.idealseed.co.uk](http://www.idealseed.co.uk)



IDEALSEED Limited  
Sales Office:  
20 Drum Farm Lane, Bo'ness, West Lothian, Scotland. EH51 9RJ

Licensed Seed Merchant: 4236  
BSPB License: L2823  
Company Number: SC489480  
V.A.T. Reg: GB 200 6496 38



**CONDITIONS OF SALE**

Idealseed Limited reserve the right to substitute any listed variety within this publication with a similar merit, should stocks become unavailable due to product demand or failed harvest.